

SAMPLE TEST NEO - 4TO GRADO

Item 1: Vocabulary

1. Look at the pictures. Choose the option that best describes the picture.



- A. Mountain
- B. City
- C. Forest
- D. Desert
- E. Park

2. Look at the picture, then read and complete the sentence. Write the correct word.



He's having _____.

3. Listen to the audio, then choose the correct option.

Audio 1:

- A. Cup
- B. Cut

- C. Cold
- D. Cop
- E. Cough

Audio 2:

- A. Waitress
- B. Receptionist
- C. Chef
- D. Nurse
- E. Musician

Item 2: Grammar

1. Complete the sentence using the correct form of the verb *To be*.

The houses in my neighborhood ____ (am / is / are) big.

2. Complete the sentence using the correct Possessive Adjective.

That is not my father's car. (My / Your / His / Hers). _____ car is blue.

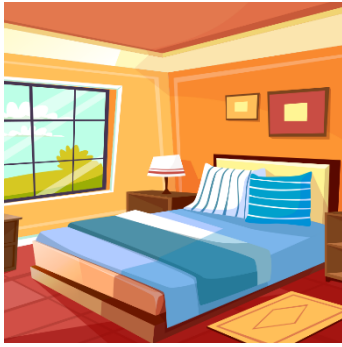
3. Look at the pictures. Choose the correct answer.

1.



- A. A nurses work in a hospital.
- B. A nurse work in a hospital.
- C. Nurses works in a hospital.
- D. A nurse works in an hospital.
- E. A nurse works in a hospital.

2. Where is the bed?



- A. The bed is at the bedroom.
- B. The bed is on the bedroom.
- C. The bed is the bedroom.
- D. The bed is not in the bedroom.
- E. The beds are in the bedroom.

Item 3: Listening

1. Listen to the Audio. Then answer the questions.

AUDIO SCRIPT:

My lost cat

"Hello! My name is Eva and I have a cat. My cat's name is Cherry. She is lost. Please, help me find my cat. Her fur is white and very fluffy. Cherry has blue eyes. If you find her, please call us at 012 6664 7862."

Answer the questions:

1. What does Cherry look like according to the text?

- A. She has black fur and green eyes.
- B. She has white fur and blue eyes.
- C. She has grey hair and yellow eyes.
- D. She is a small dog with brown spots.
- E. She is a fluffy rabbit with blue eyes.

2. What should you do if you find the cat?

- A. Take the cat to a pet shop.
 - B. Call Eva at the provided number.
 - C. Look for Cherry's house in the park.
 - D. Send an email to Eva's school.
 - E. Give the cat some food and water.
-

Item 4: Reading

A thank you card

Hello, Lena!

Thank you very much for coming to my birthday party and for the present. I really like the purse. It's perfect! You're very kind.

How are you? Good luck in your Math exam. I hope you get great marks!

Speak soon.

Kara.

Answer the questions:

1. Why is Kara writing a card to Lena?

- A. To tell Lena that she lost her new purse.
- B. To invite Lena to a new party next week.
- C. To thank Lena for the birthday present and for coming to the party.
- D. To ask Lena for help with Math exam.
- E. To complain about the music at the birthday party.

2. What does Kara think about the purse Lena gave her?

- A. She likes it and thinks it is perfect.
- B. She thinks the purse is for a Math exam.
- C. She thinks it is a very expensive present.
- D. She thinks it is too small for her books.
- E. She wants to change it for a different color.